

Banks Lane Junior School

Safeguarding Policy – Education

| | |
|----------------------------|----------------|
| Agreed by Governing Board: | September 2017 |
| Reviewed: | September 2018 |
| Reviewed: | May 2019 |
| Date of next review: | May 2020 |

Table of Contents

| | |
|---|----|
| OUTLINE..... | 6 |
| SAFEGUARDING DEFINITION: | 6 |
| CHILD PROTECTION DEFINITION: | 6 |
| RATIONALE: | 6 |
| PURPOSE: | 7 |
| LANGUAGE: | 7 |
| CONTENTS..... | 8 |
| PREVENTION..... | 8 |
| DEFINITIONS | 9 |
| Abuse | 9 |
| Physical abuse..... | 9 |
| Emotional abuse..... | 10 |
| Sexual abuse | 10 |
| Child Sexual Exploitation (CSE): | 10 |
| Neglect..... | 11 |
| Children and young people who harm others (also referred to as Peer-on peer abuse)..... | 11 |
| Contextual Safeguarding | 11 |
| ROLES AND RESPONSIBILITIES..... | 12 |
| The use of 'reasonable force'..... | 13 |
| Students who harm others (peer-on-peer abuse)..... | 13 |
| SAFER USE OF THE INTERNET AND DIGITAL TECHNOLOGY | 14 |
| Use of mobile phones | 14 |
| Work mobile phones | 14 |
| Personal mobile phones | 14 |
| Cameras: Photography and Images | 15 |
| YOUTH PRODUCED SEXUAL IMAGERY | 15 |
| CYBER-BULLYING..... | 16 |
| ONLINE & GAMING SAFETY | 16 |
| PROCEDURES AND RECORD-KEEPING..... | 17 |
| Children Missing out on Education and Missing from Education..... | 18 |
| SUPPORTING VULNERABLE PUPILS..... | 19 |

| | |
|---|----|
| Children with special needs and disabilities | 19 |
| EARLY IDENTIFICATION RECOGNISING AND RESPONDING TO SAFEGUARDING NEEDS | 19 |
| EXTREMISM AND RADICALISATION | 20 |
| OTHER SPECIFIC SAFEGUARDING ISSUES..... | 21 |
| Domestic abuse/violence | 21 |
| Honour Based Violence (HBV) including Forced Marriage (FM): | 21 |
| Female Genital Mutilation (FGM): | 21 |
| Breast Ironing: | 21 |
| The criminal exploitation of children: The criminal exploitation of children is a geographically widespread form of harm that is a typical feature of county lines criminal activity: drug networks or gangs groom and exploit children and young people to carry drugs and money from urban areas to suburban and rural areas, market and seaside towns. Key to identifying potential involvement in county lines are missing episodes, when the victim may have been trafficked for the purpose of transporting drugs..... | 22 |
| SAFER RECRUITMENT AND SAFER WORKING PRACTICE..... | 22 |
| GOVERNING BOARD DUTIES & RESPONSIBILITIES | 23 |
| OTHER RELATED POLICIES..... | 23 |
| APPENDICES | 24 |
| | 26 |
| USEFUL LINKS, FURTHER ADVICE AND GUIDANCE | 27 |
| Local Guidance | 27 |
| Young People and Self-harm- Stockport Schools' Version..... | 27 |
| Stockport Female Genital Mutilation Pathway..... | 27 |
| Stockport procedures for responding to child sexual exploitation..... | 27 |
| Stockport Suicide Prevention..... | 27 |
| Greater Manchester Project Phoenix (action against child sexual exploitation)..... | 27 |
| Stockport Early Help Assessment..... | 27 |
| Private Fostering in Stockport..... | 27 |
| Information Sharing and Team Around the School..... | 27 |
| Information Governance | 27 |
| Stockport Safeguarding Children Board..... | 27 |
| National Guidance & Resource | 27 |
| Keeping_Children_Safe_in_Education 2018 | 27 |
| Early-years-foundation-stage-framework..... | 27 |
| Working_Together_to_Safeguard_Children-2018..... | 27 |
| What-to-do-if-you're-worried-a-child-is-being-abused..... | 27 |

| | |
|--|-----------|
| Responding to sexting incidents..... | 28 |
| Sexting_In_Schools_Jan17.pdf | 28 |
| Prevent-duty-guidance..... | 28 |
| Educate Against Hate..... | 28 |
| Safeguarding-children-who-may-have-been-trafficked-practice-guidance..... | 28 |
| Multi-agency statutory guidance on FGM | 28 |
| INFORMATION YOU MAY BE ASKED TO PROVIDE..... | 29 |
| INFORMATION & TELEPHONE NUMBERS FOR CONSULTATION AND REFERRAL | 29 |
| Advice is available from: | 29 |
| Possible indicators of abuse..... | 31 |
| The LADO | 32 |
| LADO..... | 32 |

BANKS LANE JUNIOR SCHOOL

Schools Safeguarding Policy

| | |
|---------------------------------|---|
| POLICY AUTHOR | ADRIAN BASSETT - DSL/DEPUTY HEADTEACHER GILLIAN COLLINS - BUSINESS MANAGER |
| RATIFIED BY THE GOVERNING BOARD | |
| SIGNED: | _____ CHAIR OF GOVERNORS _____ SAFEGUARDING GOVERNOR |
| TO BE REVIEWED: | SPRING 2020 |

At Banks Lane Junior School the following members of the school community hold the following positions

| Designated Safeguarding Lead | Safeguarding Governor |
|------------------------------------|-----------------------|
| Adrian Bassett, Deputy Headteacher | Jackie Graham |

Concerns or allegations about a member of staff or volunteer should be shared with:

| The Headteacher / Principal | Deputy Head / Principal (in the absence of the Headteacher) | Chair of Governors (in the event of an allegation against the headteacher) |
|-----------------------------|--|---|
| Ed Milner | Adrian Bassett | Jackie Graham |

OUTLINE

Safeguarding and promoting the welfare of children and young people is everyone's responsibility. Everyone who comes into contact with children, their families and carers has a role to play in safeguarding them and promoting their welfare. In order to fulfil this responsibility effectively, all professionals should make sure their approach is child-centred. This means that they should consider, at all times, what is in the best interests of the child.

No single professional can have a full picture of a child's needs and circumstances. If children and families are to receive the right help at the right time, everyone who comes into contact with them has a role to play in identifying concerns, sharing information and taking prompt and restorative action. In line with this understanding, any adult working or volunteering in the school community has a responsibility to recognise when a child or young person may be in need or be vulnerable in some way, and to respond to this recognition in a timely and appropriate way.

SAFEGUARDING DEFINITION:

Safeguarding and promoting the welfare of children is defined for the purposes of this guidance as: protecting children from maltreatment; preventing impairment of children's health or development; ensuring that children grow up in circumstances consistent with the provision of safe and effective care; and taking action to enable all children to have the best outcomes.

(*"Working Together to Safeguarding Children" 2018*)

CHILD PROTECTION DEFINITION:

Child Protection is a part of the safeguarding agenda. It refers to the action that is required to be undertaken to protect children who are suffering, or are likely to suffer, significant harm.

THIS POLICY ENCOMPASSES CHILD PROTECTION.

RATIONALE:

At Banks Lane Junior School we recognise the responsibility we have under Section 175/157 of the Education and Inspections Act 2002, to have arrangements for safeguarding and promoting the welfare of children. The Governing Board approve the S175/157 return to the LA on a yearly basis. This policy demonstrates the schools commitment and compliance with safeguarding legislation.

Staff and volunteers working in our school have a crucial role to play in noticing indicators of possible abuse or neglect and referring them to the correct persons or services for support and intervention. Everyone working or volunteering at this school is trained to recognise signs of concern and in line with this policy, must report concerns following school and local authority procedures.

Staff and volunteers are updated on safeguarding issues frequently across the year by the DSO and members of the Senior Leadership Team at:

- Weekly briefing meetings on Tuesday mornings;
- Weekly staff meetings;
- Email updates and memos;
- Staffroom notice board

These updates include learning from serious case reviews and local learning reviews on how to improve practice to prevent children from harm.

The SLT meet with the DSO, SENDCO and Learning Mentor on a weekly basis to review any cases of concern and to raise any new concerns.

In our school we believe that the welfare of every child is paramount and we take safeguarding very seriously. Therefore, should staff have any concerns they feel are of a safeguarding nature, they are expected to report, record and take the necessary steps to ensure that the child is safe and protected and that key staff in school are aware promptly of any such concerns. We are aware that this can lead to challenge from parents/carers, but at all times we collectively work to ensure that the child is at the heart of all our decisions and that we act in their best interests.

As part of our commitment to and compliance with safeguarding legislation and guidance; we also refer to:

- [Working Together to Safeguard Children 2018](#)
- [What to do if you are worried a child is being abused. 2015](#)
- [Keeping children Safe In Education 2018](#)
- [Guidance for safer working practice for staff working in education settings. October 2015](#)
- [Greater Manchester Safeguarding Policies and Procedures](#)
- [Preventing and tackling bullying advice](#)
- [Sexual-violence-and-sexual-harassment-between-children-in-schools-and-colleges](#)
- School online safety policy
- Staff Code of Conduct
- Staff use of mobile phones and Social Media Policy

PURPOSE:

The purpose of the policy is to ensure that the welfare of children is understood and promoted at all times. In this school we understand that the welfare of the child is paramount.

We strive to ensure that all children regardless of their age, gender, ability, culture, race, language, religion or sexual identity are protected from harm in all its forms. All staff and volunteers have an equal responsibility to act on concerns, suspicions or disclosures that lead them to suspect or understand a child may be at risk of harm. As part of our duty of care we also work to ensure that pupils and staff involved in safeguarding and child protection issues receive appropriate support.

All staff and volunteers are required to adhere to our Code of Conduct (including the use of ICT and social media). All staff and volunteers understand what to do if there are concerns or allegations about any adult working or volunteering in our school during or outside of the normal school day.

The procedures contained in this policy apply to all staff, volunteers, sessional workers, students, agency staff or anyone working on behalf of Banks Lane Junior School. We expect that this policy takes primacy over other agency policies when work is being delivered on this site or on our behalf, as we maintain a duty of care to all in our school community. Any expected exception to this must be named and negotiated ahead of work being undertaken.

LANGUAGE:

Safeguarding and promoting the welfare of children refers to the process of protecting children from maltreatment, preventing the impairment of children's health or development, ensuring that children are growing up in circumstances consistent with the provision of safe and effective care and taking action to enable all children to have the best life chances.

Early Help refers to mechanisms providing support as soon as a problem emerges at any point in a child's life, from the foundation years through to the teenage years.

Child Protection refers to the activity undertaken to protect specific children who are suffering, or are likely to suffer, significant harm.

Staff refers to all those working for or on behalf of the School in either a paid or voluntary capacity and will be used from this point on in this document.

Child refers to all children and young people who have not yet reached the age of 18.

Parent refers to birth parents and other adults who are in a parenting role including: step-parents, foster parents, carers and adoptive parents.

CONTENTS

This policy has been divided into four key areas:

Prevention;

Procedures and Record Keeping;

Support;

Safer Recruitment.

Additional materials are referenced or provided in the Appendices.

Detailed procedural guidance and additional references are available to all staff and governors here- [Greater Manchester Safeguarding Procedures](#) .

PREVENTION

We will establish and maintain an ethos where:

Children feel safe and secure in an environment which allows them to learn, and develop on a journey to achieving their full potential.

Children understand that there are adults in the school whom they can talk to if worried, scared or facing difficulty. We will work hard to be a restorative staff team who actively listen and respond.

Staff development and awareness in respect of safeguarding is given the highest priority across the school to ensure we all fully understand and implement the national and local agenda.

We deliver a broad, balanced and age appropriate PSHE (Personal, Social, Health & Economic) Education Programme, where children and young people acquire the knowledge, understanding and skills they need to manage their lives, now and in the future. It will support them to manage and assess risk effectively and develop the skills to recognise healthy and unhealthy relationships (both online and in the physical world); and where to find sources of support.

Children are supported in recognising risks in various forms including on the internet. They understand what kind of physical contact is acceptable and are able to recognise inappropriate pressure from others, including that which threatens their personal safety and well-being and give them strategies to counter this.

Staff feel empowered to share safeguarding concerns in a swift and timely way bringing them to the attention of the Designated Safeguarding Lead (DSL), and/ or the Head Teacher. Accepting that safeguarding is the responsibility of all in our community, staff feel able to ask safeguarding questions and receive appropriate feedback following up on concerns as part of this shared responsibility to children.

Emerging issues and themes are proactively addressed and fed back to the [Local Authority \(LA\)](#) and Stockport Safeguarding Children Board (SSCB), via the Senior Advisor for Safeguarding in Education (SASE) to ensure a multi-agency awareness and that strategies are developed.

There is a clear approach to substance misuse (drugs and alcohol). Any issues of drugs and substance misuse are recorded and there are strategies to educate children appropriately delivered throughout the school and curriculum.

We use the mechanisms and services available to understand the range of issues which may make a child vulnerable and ensure children and young people receive the most appropriate support or referral and access to other provision; actively supporting multi agency planning for those children and, in doing so, providing information about the 'voice of the child' and the child's personal experiences and perspectives as evidenced by observations or information provided.

Our school's arrangements for consulting with, listening and responding to pupils are:

- School Council;
- Restorative Champions (Years 5 and 6);
- Year 3 / Year 6 reading buddies;
- Regular pupil voice;
- Circle Time;
- PSHE spiral curriculum.

Our school's arrangements for consulting with, listening and responding to parents are:

- The Roar - weekly on-line newsletter;
- Annual Parent Survey (Spring term);
- Parent governors;
- Parents sub-groups (eg RSE);
- Parent Interviews (Autumn and Spring);
- Annual school report - parent response slip;
- FOBL - Friends of Banks Lane;
- LPPA process.

There is a commitment to the continuous development of staff with regard to safeguarding training:

- All staff access training annually with regular updates across the academic year;
- We undertake SSCB 'endorsed' Basic Awareness training and all new staff, as part of their induction, access safeguarding training within the first term of their employment/placement;
- The Designated Lead and/or deputy attends the SSCB DSL safeguarding training on bi-annual basis.

DEFINITIONS

Staff are trained and supported to understand and recognise indicators of the types of abuse that some children experience and work to the following definitions:

All school staff are aware that abuse, neglect and safeguarding issues are rarely standalone events that can be covered by one definition or label. In most cases multiple issues may overlap with one another.

Abuse: a form of maltreatment of a child. Somebody may abuse or neglect a child by inflicting harm or by failing to act to prevent harm. Children may be abused in a family or in an institutional or community setting by those known to them or, more rarely, by others (e.g. via the internet). They may be abused by an adult or adults or another child or children.

Physical abuse: a form of abuse which may involve hitting, shaking, throwing, poisoning, burning or scalding, drowning, suffocating or otherwise causing physical harm to a child. Physical harm may also be caused when a

parent or carer fabricates the symptoms of, or deliberately induces, illness in a child.

Emotional abuse: the persistent emotional maltreatment of a child such as to cause severe and adverse effects on the child's emotional development.

It may involve conveying to a child that they are worthless or unloved, inadequate, or valued only insofar as they meet the needs of another person.

It may include not giving the child opportunities to express their views, deliberately silencing them or 'making fun' of what they say or how they communicate.

It may feature age or developmentally inappropriate expectations being imposed on children. These may include interactions that are beyond a child's developmental capability as well as overprotection and limitation of exploration and learning, or preventing the child participating in normal social interaction.

It may involve seeing or hearing the ill-treatment of another.

It may involve serious bullying (including cyberbullying), causing children frequently to feel frightened or in danger, or the exploitation or corruption of children.

Some level of emotional abuse is involved in all types of maltreatment of a child, although it may occur alone.

Sexual abuse: involves forcing or enticing a child or young person to take part in sexual activities, not necessarily involving a high level of violence, whether or not the child is aware of what is happening. The activities may involve physical contact, including assault by penetration (for example rape or oral sex) or non-penetrative acts such as masturbation, kissing, rubbing and touching outside of clothing. They may also include non-contact activities, such as involving children in looking at, or in the production of, sexual images, watching sexual activities, encouraging children to behave in sexually inappropriate ways, or grooming a child in preparation for abuse (including via the internet). Sexual abuse is not solely perpetrated by adult males. Women can also commit acts of sexual abuse, as can other children.

Child Sexual Exploitation (CSE): is a form of child sexual abuse, it involves exploitative situations, contexts and relationships where young people receive something (for example food, accommodation, drugs, alcohol, gifts or money) as part of a grooming process. Ultimately, this results in them engaging in sexual activities. Sexual exploitation can take many forms ranging from the seemingly 'consensual' relationship where sex is exchanged for affection or gifts, to serious organised crime by gangs and groups.

All staff are alert to possible indicators and will raise concerns as appropriate. They are aware of this policy, including where to find Notes of Concern, how to complete them and to hand to the DSO or DSL within 30 Minutes of writing it.

We take a proactive approach to preventative work - we know it could happen here, we know the signs to look for and we know who to report it to.

Child Sexual Exploitation is a form of child sexual abuse. It occurs where an individual or group takes advantage of an imbalance of power to coerce, manipulate or deceive a child or young person into sexual activity (a) in exchange for something the victim needs or wants, and/or (b) for the financial advantage or increased status of the perpetrator or facilitator. The victim may have been sexually exploited even if the sexual activity appears consensual. Child sexual exploitation does not always involve physical contact; it can occur through the use of technology.

(Child Sexual Exploitation, DfE, Feb 2017)

Neglect: the persistent failure to meet a child's basic physical and/or psychological needs, likely to result in the serious impairment of the child's health or development. Neglect may occur during pregnancy as a result of maternal substance abuse. Once a child is born, neglect may involve a parent or carer failing to:

- provide adequate food, clothing and shelter (including exclusion from home or abandonment);
- protect a child from physical and emotional harm or danger;
- ensure adequate supervision (including the use of inadequate care-givers);
ensure access to appropriate medical care or treatment.
- include neglect of, or unresponsiveness to, a child's basic emotional needs.

Children and young people who harm others (also referred to as Peer-on-peer abuse): Peer-on-peer abuse can take various forms, including: serious bullying (including cyber-bullying), relationship abuse, domestic violence, child sexual exploitation, youth and serious youth violence, harmful sexual behaviour, and/or gender based violence.

There is no clear boundary between incidents that should be regarded as peer on peer abuse and incidents that would be considered as bullying, sexual experimentation, etc.

Assessments must be made on a case by case basis. (Firmin, C. 2017. *Abuse Between Young People*)

Contextual Safeguarding

Safeguarding incidents and/or behaviours can be associated with factors outside the school or college and/or can occur between children outside the school. All staff, but especially the designated safeguarding lead (or deputy) should be considering the context within which such incidents and/or behaviours occur. This is known as contextual safeguarding, which simply means assessments of children should consider whether wider environmental factors are present in a child's life that are a threat to their safety and/or welfare. Children's social care assessments should consider such factors so it is important that schools and colleges provide as much information as possible as part of the referral process. This will allow any assessment to consider all the available evidence and the full context of any abuse.

We hold weekly safeguarding meetings attended by the Headteacher, DSL, Business Manager, SENDCo and Learning Mentor.

There are termly TAS meetings attended by the DSO, School Secretary, Learning Mentor, SENDCo, School Age + Worker, Social Worker and School Nurse

ROLES AND RESPONSIBILITIES

The school will ensure that every member of staff and person working on behalf of the School:

- Knows the name and of the DSL and any deputies, understands his/her role and responsibilities, and how to contact them.
- Understands they have an individual responsibility to refer safeguarding and child protection concerns.
- Will receive training at the point of induction so that they know:
 - their personal responsibility / code of conduct / teaching standards;
 - SSCB child protection procedures and how to access them;
 - the need to be vigilant in identifying cases of abuse at the earliest opportunity;
 - how to support and respond to a child who discloses abuse/ significant harm;
 - their duty concerning unsafe practices of a colleague;
 - the DSL will disclose any information about a pupil to other members of staff **only** on a need to know basis;
 - the school will undertake appropriate discussion with parents prior to involvement with other agencies wherever this is appropriate;
 - the school will ensure that parents have an understanding of their obligations re: Child Protection by intervention as and when appropriate;
 - to develop effective links with relevant agencies in relation to safeguarding (child protection);
 - to ensure that, where there are unmet needs, an assessment of early help is initiated ;
 - to send appropriate representatives to case conferences, core groups and child protection review meetings.

Where a member of staff is concerned that a child is in immediate danger or is at risk of harm they should report this to the Designated Safeguarding Lead, or their Deputy, without delay. A written record will be made of these concerns as immediately following the disclosure/concern being raised. Our school procedure is for the note of concern to be passed to the DSL within 30 minutes. If the DSL is not present it would be passed to the Headteacher.

Where staff have conversations with a child who discloses abuse they follow the basic principles:

- listen and remain calm;
- never ask a child if they are being abused;
- make a record of discussion to include time, place, persons present and what was said (child language - do not substitute words);
- advise you will have to pass the information on;
- never take photographs of any injury;
- never record a child;
- never undress a child to physically examine them;
- allow time and provide a quiet space for support;
- At no time promise confidentiality to a child or adult.

We will notify any Lead Social Worker if:

- a pupil subject to a Child Protection Plan (CPP) is excluded (fixed term or permanent)
- there is an unexplained absence of a pupil on a CPP of more than 2 days or 1 day following a weekend, or as agreed as part of a CPP
- if a child is missing and there is a need to follow Stockport's policy and any statutory guidance on Children Missing Education (CME)
- additional concerns arise

We understand that parents often hold key information about incidents, allegations or concerns therefore, **in the majority of situations; the Designated Safeguarding Lead or key staff member of school staff will**

Speak to the parents and gain their consent to discuss any matters with other relevant agencies. There will be very few instances where, to speak to the parents, could further endanger the child. In those situations they would still consult/refer, but would have clearly recorded reasons as to why they had not gained parental consent.

The use of 'reasonable force'

There are circumstances when it is appropriate for staff in schools to use reasonable force to safeguard children. The term 'reasonable force' covers the broad range of actions used by staff that involve a degree of physical contact to control or restrain children. This can range from guiding a child to safety by the arm, to more extreme circumstances such as breaking up a fight or where a young person needs to be restrained to prevent violence or injury. 'Reasonable' in these circumstances means 'using no more force than is needed'. All staff had Team Teach training in Autumn 2018. School refers to the LA's Care and Control guidance document. [N:\SAFEGUARDING\CareandControlInfoandGuidance.WORDNovember2017.pdf](#)

Students who harm others (peer-on-peer abuse)

We believe that all students have the right to be taught in a safe environment to enable them to optimise their learning and achievement. We expect all students to have respect for themselves and others and work to ensure everyone in our community feels safe, valued and supported. The school promotes the values of honesty, acceptance, inclusion and fairness within a caring, restorative and nurturing environment.

Students at our school have a variety of needs, some being very complex. We aim to provide a high level of pastoral care and support for all students and encourage appropriate and cooperative behaviour. Underpinned by this support students are expected to take responsibility for their own behaviour with appropriate strategies offered to enable this.

We understand that safeguarding issues can manifest themselves via peer on peer abuse. This will mostly include:

- bullying (including cyber bullying);
- gender based violence/sexual assaults;
- sexting;
- physical abuse such as hitting, kicking, shaking, biting, hair pulling, or otherwise causing physical harm;
- initiating/hazing type violence and rituals.

Staff are clear on our procedures with regards to peer on peer abuse and such matters are always taken seriously. In our school we follow the school's safeguarding procedures the same way as any other safeguarding concern, observation or disclosure at school. See Anti-bullying policy [N:\POLICIES\Anti-Bullying Policy 2019.doc](#) and Pupil's Acceptable Use Agreement [N:\ICT\Acceptable Use Policy for Students.docx](#)

Where sexual violence or sexual harassment between children is alleged then the school follows the guidance issued by the DfE in 2018. [Sexual violence and sexual harassment between children guidance](#). Our staff have access to additional information, advice and training to support them in this area of work.

SAFER USE OF THE INTERNET AND DIGITAL TECHNOLOGY

Banks Lane Junior School recognises that in a modern learning environment, use of the Internet, multimedia devices and digital imaging facilities are part of everyday requirements. However a child/young person's safety will remain the priority of the school.

All staff are aware that any items that have capability for use of the Internet or the creation of digital images (including mobile phones) must be used by children/young people under appropriate supervision and in accordance with the schools acceptable use policy. If any such item that belongs to a member of staff is brought onto the school site, it is the responsibility of that staff member to ensure that these items contain nothing of an inappropriate nature and that they are used in line with school policy. See Acceptable User Policy [N:\ICT\Acceptable User Policy.doc](#) and [N:\ICT\Acceptable Use Policy for Students.docx](#)

If there is any suspicion that any multimedia device or computer contains any images or content of an inappropriate nature it will be locked, secured and, the Head Teacher or DSL will be informed immediately.

Use of mobile phones

Mobile phones have a place in settings, especially on outings when they are often the only means of contact available to settings and can be helpful in ensuring children are kept safe.

We will:

- Only use mobile phones appropriately, and ensure staff have a clear understanding of what constitutes misuse and know how to minimise the risk;
- Ensure the use of a mobile phone does not detract from the quality of supervision and care of children;
- Ensure all mobile phone use is open to scrutiny;
- Ensure staff are vigilant and alert to any potential warning signs of the misuse of mobile phones;
- Ensure staff are responsible for their own behaviour regarding the use of mobile phones and understand how to avoid putting themselves into compromising situations, which could be misinterpreted and lead to potential allegations;
- Ensure the use of mobile phones on outings is included as part of the risk assessment, for example, how to keep personal numbers that may be stored on the phone safe and confidential;
- Adhere to the school policy on the recording of images and the use of equipment.
Adult Acceptable User Policy. Student Acceptable User Policy.

Work mobile phones

Not applicable.

Personal mobile phones

To protect children we will ensure that personal mobiles:

- Are stored securely in class store rooms and will be switched off whilst staff are on duty;
- Are not used to take pictures of the children attending the setting or that images are not shared;
- Will not be used to take photographs, video or audio recordings in our setting;
- Are not used to contact parents or children - exception will only be by agreement with the SLT.

Visitors are not permitted to use mobile phones or other camera/ internet enabled devices without the express permission of the Headteacher and are handed instructions as they sign in.

Although we do not encourage children to bring mobile phones to school, we do recognise that some children will need them to contact parents after school. In this case, mobile phones should be switched off with a personal password, kept in school bags and not be visible in lessons.

In line with Keeping Children Safe in Education 2018, we have a clear policy on the use of mobile technology in the school.

Children are not permitted to access mobile phones or personal electronic devices in school. If they are brought into school they are securely stored until the end of the school day.

Cameras: Photography and Images

The vast majority of people who take or view photographs or videos of children do so for entirely innocent, understandable and acceptable reasons. However, due to cases of abuse to children through taking or using images, we must ensure that we have safeguards in place.

To protect children we will:

- Obtain parents' and carers' consent for photographs to be taken used for or published (for example, on our website or displays).
- Ensure the school's designated camera is only used in the school and any images taken will not be emailed as it may not be secure. (In some instances, it may be required to seek parental permission to email images, but the potential risks must be made clear to parents).
- Ensure that children are appropriately dressed, and only use the child's first name with an image.
- Ensure that personal cameras are not used to take photographs, video or audio recordings in our school without prior explicit consent from the school, for example, for a special event, such as a Christmas play. Please see Home/School agreement.
- Ensure that all images are stored securely and password protected. Where images are stored the setting will register with the Information Commissioners Office (ICO), in accordance with data protection laws.
- Ensure where professional photographers are used DBSs, references and parental consent will be obtained prior to photographs being taken.
- Ensure 'acceptable use' rules regarding the use of cameras and camera enabled devices by children are embedded in practice.
- Ensure the use of cameras is closely monitored and open to scrutiny.

YOUTH PRODUCED SEXUAL IMAGERY

'Sexting' describes the use of technology to share sexual and sexually implied content. This content includes texts, photos of partial nudity and sexual images or video. This could be shared between partners, peers and strangers. Individuals may use a range of technology to share the content.

The sharing of naked pictures is not a new thing but the speed with which you can share & the potential audience size has dramatically changed as a result of the online world.

Whilst professionals refer to the issue as 'sexting' there is no clear definition of 'sexting'. Many professionals consider sexting to be 'sending or posting sexually suggestive images, including nude or semi-nude photographs, via mobiles or over the Internet. Yet when young people are asked 'What does sexting mean to you?' they are more likely to interpret sexting as 'writing and sharing explicit messages with people they know'. Similarly, many parents think of sexting as flirty or sexual text messages rather than images.

This advice only covers the sharing of sexual imagery by young people. Creating and sharing sexual photos and videos of under-18s is illegal and therefore causes the greatest complexity for schools and other agencies when responding. It also presents a range of risks which need careful management.

On this basis this advice introduces the phrase 'youth produced sexual imagery' and uses this instead of 'sexting.' This is to ensure clarity about the issues this advice addresses.

'Youth produced sexual imagery' best describes the practice because:

- 'Youth produced' includes young people sharing images that they, or another young person, have created of themselves;
- 'Sexual' is clearer than 'indecent.' A judgement of whether something is 'decent' is both a value judgement and dependent on context;
- 'Imagery' covers both still photos and moving videos (and this is what is meant by reference to imagery throughout the document).

Sexting in schools & colleges: responding to incidents and safeguarding young people
(DfE, Nov 2016)

https://www.gov.uk/government/uploads/system/uploads/attachment_data/file/609874/6_2939_SP_NCA_Sexting_In_Schools_FINAL_Update_Jan17.pdf

'Sexting' (self-generated inappropriate images) is one of a number of 'risk-taking' behaviours associated with the use of digital devices, social media or the internet. It is accepted that young people experiment and challenge boundaries and therefore the risks associated with 'online' activity can never be completely eliminated. However Banks Lane Junior School takes a pro-active approach in its ICT and Enrichment programmes to help students to understand, assess, manage and avoid the risks associated with 'online activity'. The school recognises its duty of care to its young people who do find themselves involved in such activity as well as its responsibility to report such behaviours where legal or safeguarding boundaries are crossed.

There are a number of definitions of 'sexting' but for the purposes of this policy sexting is simply defined as:

- Inappropriate images or videos generated by children under the age of 18, or of children under the age of 18 that are of a sexual nature or are indecent.
- These images are shared between young people and/or adults via a mobile phone, hand held device, computer, 'tablet' or website with people they may or may not know.

There are many different types of sexting and it is likely that no two cases will be the same. It is necessary to carefully consider each case on its own merit. However, it is important that Banks Lane Junior School applies a consistent approach when dealing with an incident to help protect young people and the school. For this reason the Designated Safeguarding Lead (or Headteacher in the absence of the DSL) needs to be informed of any 'sexting' incidents. The range of contributory factors in each case also needs to be considered in order to determine an appropriate and proportionate response. All colleagues are expected to be aware of this policy.

Further advice can be found here:

<http://swgfl.org.uk/magazine/Managing-Sexting-Incidents/Sexting-Advice.aspx>

[Sexting In Schools Jan17.pdf](#)

CYBER-BULLYING

Cyber bullying is defined and covered in our anti-bullying policy. [N:\POLICIES\Anti-Bullying Policy 2019.doc](#)
See also <https://www.ceop.police.uk/safety-centre/> for advice.

ONLINE & GAMING SAFETY

The internet and internet gaming are enjoyed by many people and are often activities families can enjoy together. However, use of the internet and online games isn't without risk.

As part of our approach to online safety we will support pupils and their families in understanding the potential risks of online activity and how best to avoid them. We will work with parents and carers to support them in the following:

- Understanding the appropriateness of games and apps;
- location and access to information and resources for adults and pupils;

- teaching e-safety in the curriculum;
- offering parental information and advice sessions;
- raising awareness of online grooming;
- teaching our children how to report abuse or concerns.

In school we ensure that we have suitable filtering and monitoring systems in place, as described in *Keeping Children Safe in Education 2018*. This is a buy-back through the Local Authority and they are responsible for this.

PROCEDURES AND RECORD-KEEPING

Banks Lane Junior School will follow [Greater Manchester Safeguarding Procedures](#) in detail and adhere to any local guidance and policies from SSCB as required.

Safeguarding Records are held both electronically and in hard copy. As are reports relating to Safeguarding and Child Protection concerns. They are kept in a separate, confidential file, securely stored away from the main pupil file. Authorisation to access these records is controlled by the Designated Safeguarding Officer.

The school ensures that safeguarding information, including Child Protection information, is stored and handled in line with the principles of the Data Protection Act 2018 and General Data Protection Regulation (GDPR) ensuring that information is:

- used fairly and lawfully;
- for limited, specifically stated purposes;
- used in a way that is adequate, relevant and not excessive;
- accurate;
- kept for no longer than necessary;
- handled according to people's data protection rights;
- kept safe and secure.

Any concerns about a child will be recorded in writing as soon as possible and in any circumstance within 24 hours. **The inability to record a concern should not delay the sharing of urgent information to the DSL (police or social care if required) verbally. Written records should then be made as soon as possible.**

All records will provide a factual, evidence-based account using the child's words. Timely, accurate recording of every episode/incident/concern/activity/actions will be made **including telephone calls to other professionals**. Records will be signed, dated and where appropriate, witnessed. Support and advice will be sought from Children's Social Care (via the MASSH), Senior Advisor for Safeguarding in Education (SASE) or the Local Area Designated Officer (LADO), whenever necessary. There is always a DSL on hand who has the necessary seniority and skills, has undertaken appropriate safeguarding training, and is given the time to carry out this important role.

This safeguarding policy is updated annually or in line with any new DfE guidance (as required).

In the case of child protection referral the DSL or Headteacher will contact MASSH immediately (alongside any other emergency or support services that may be required).

In the case of poorly explained serious injuries / injuries causing concern or where behaviour or concerns arouse suspicion or if in any doubt, the Designated Safeguarding Lead or Headteacher should contact the MASSH for advice.

The DSL will keep written (electronically or by hand), signed, timed and dated records detailing any disclosures and action taken as near to the time of disclosure as possible even when no investigation is undertaken; should

the MASSH agree to initiate a referral verbally a Child Protection Referral Form will still be required within 24 hours.

Allegations are always shared directly with the Head. Where an allegation of abuse is made against any member of staff/ volunteer, deputy or designated safeguarding person, the Headteacher will speak with the Local Authority Designated Officer (LADO) at the Safeguarding Children Unit to discuss the next steps.

If the allegation is against the Head, the Chair of Governors should be contacted immediately and s/he seek advice from the LADO. If the allegation is against both Head and Chair then the LADO should be contacted directly. No member of staff will conduct their own investigation or pass on information to the alleged perpetrator. Professionals can contact the LADO directly if they feel it is more appropriate to do so.

Our school has a whistleblowing procedure. The hard copy is located in the staffroom. It is important to note that is part of a professional's duty to report safeguarding issues, without the expectation of anonymity. Safeguarding and whistleblowing should not be confused. "Safeguarding" refers to reporting concerns designed to protect children from harm and taking action to enable all children to have the best outcomes. In contrast "whistleblowing" describes the disclosure of concerns regarding a danger or illegality that has a public interest, usually because it threatens others or impacts on public funds.

All meetings with parents and conversation are recorded on a Conversation Record Sheet which are seen by the Headteacher and held centrally. Parents have access to a dedicated email address for any concerns which is checked several times a day. concerns@bankslane-jun.stockport.sch.uk

Children Missing out on Education and Missing from Education

Under section 175 of the Education Act 2002 we have a duty to investigate any unexplained absences.

At Banks Lane Junior School we follow Stockport's procedures for dealing with children that go missing from school. All staff are aware that children going missing, particularly repeatedly, are potentially vulnerable to harm including abuse and neglect, such as sexual abuse or exploitation and child criminal exploitation. It may indicate mental health problems, risk of substance abuse, risk of travelling to conflict zones, risk of female genital mutilation or risk of forced marriage.

We also ensure that we are rigorous in our attendance procedures; these are outlined in our attendance policy. Where a child's destination is unknown when they have left our school we ensure we carry out all necessary checks and refer them as a child missing from education.

SUPPORTING VULNERABLE PUPILS

The school will endeavour to support vulnerable pupils through:

- Its ethos and culture which promotes a positive, supportive and secure environment; giving pupils a sense of being valued;
- Its behaviour policy -aimed at supporting vulnerable pupils in school. All staff will agree a consistent approach, working to support children in developing positive behaviour;
- Liaison with other appropriate agencies which support the pupil;
- Developing supportive relationships;
- Recognition that children living in difficult home environments are vulnerable and are in need of support and protection;
- Monitoring pupil welfare, keeping accurate records and notifying appropriate agencies when necessary;
- Ensuring designated safeguarding staff and their team have the opportunity to attend face to face SSCB training and network updates. (For example child sexual exploitation, domestic violence, drugs / alcohol substance misuse, Female Genital Mutilation-FGM, etc.);
- Ensuring information is transferred safely and securely when a pupil with a child protection record moves to another school. Also notifying Key Workers or Social Workers where a child leaves the school (as appropriate).

Children with special needs and disabilities

We ensure that members of staff have knowledge and understanding of the additional barriers which can exist when recognising abuse and neglect in children with special needs/disabilities.

These barriers **can** include:

- assumptions that indicators of possible abuse such as behaviour, mood and injury relate to the child's disability without further exploration;
- children with SEN and disabilities being disproportionately impacted by things like bullying - without outwardly showing any signs; and
- communication barriers and difficulties in overcoming these barriers

We regularly review our training and practice to enable staff to respond to these specific needs.

EARLY IDENTIFICATION RECOGNISING AND RESPONDING TO SAFEGUARDING NEEDS

The school acknowledges the findings of Serious Case Reviews, local learning reviews and audits. Findings are shared with all staff as part of a culture of improvement and learning. The DSL ensures s/he has information from SSCB in relation to learning reviews and ensures this information is passed on to staff to promote improvement in respect of safeguarding. As part of our ongoing culture of vigilance and development we will share learning and responses from any other relevant issues to ensure we are offering the safest environment for our pupils and staff.

All staff have seen and understand the Stockport [Levels of Need](#) document and know how to pass on any concerns no matter how 'small or low level' they seem. In accordance with local and national guidance all staff receive regular training and updates to help them identify when a child is vulnerable.

We ensure that the most appropriate referrals are made in a timely manner. We seek to work in a transparent way with our families and where appropriate will share our concerns directly with parents and indicate possible routes of support. We actively support multi agency approaches when supporting children and families. We do this based on an awareness that early help and intervention can prevent future escalation of any presenting

issues. We aim to provide information from the child's point of view in the context of their lived experience as evidenced by observations or information provided. Where staff have concerns they will always alert the DSL.

In school we have staff that are trained and can support colleagues to identify and respond to:

- Neglect;
- Drug/substance/alcohol misuse (both pupil and parent);
- Child sexual exploitation / trafficked children;
- Children missing education;
- Domestic abuse;
- Peer relationship abuse;
- Peer abuse;
- Children at risk of radicalisation;
- Emotional wellbeing & mental health;
- Sexual health needs;
- Obesity/malnutrition;
- Online grooming;
- Inappropriate behaviour of staff towards children;
- Bullying, including homophobic, racist, gender and disability. Breaches of the Equality Act 2010;
- Self-Harm;
- Female Genital Mutilation;
- Forced Marriage;
- Young carers;
- The potential additional needs of some learners such as- Looked After Children (LAC), children who have been previously LAC, those who have Special Educational Needs or Disabilities (SEND) and children whose families are seeking asylum;
- How an Education Health Care (EHC) plan links with other safeguarding processes.

The DSL is a member of the school senior leadership team. In line with local and national guidance they receive regular training and updates to equip them with the skills and knowledge to deliver in this role. A DSL is always available to offer advice and support to school staff when school is open including before and after school activity or for trips and visits.

School staff contribute to assessments and actively support multi- agency planning for children. Staff have an understanding of the Stockport Early Help Assessment (EHA) and Intervention model and make decisions based on a child's development needs, parenting capacity and family & environmental factors to support referrals. We use the Stockport [Levels of Need](#) document to inform our decision making.

In contributing to meetings, in addition to information about the child's academic functioning, the school provides information about the 'voice of the child' and the child's experiences of life as evidenced by observations or information provided through the multi-agency forum.

Our school operates a ***Team around the school model*** (TAS). The meetings are held termly with all relevant professional bodies to discuss and support vulnerable children within school. In addition, school holds weekly safeguarding meetings with the Headteacher, DSL, SENDCO, Learning Mentor and Business Manager.

EXTREMISM AND RADICALISATION

Banks Lane Junior School seek to protect children and young people from the influences of all violent extremism including, but not restricted to:

- Extremist Far Right / Neo Nazi / White Supremacist ideology;
- Islamic extremist ideology;
- Irish Nationalist and Loyalist paramilitary groups;
- Extremist animal rights movements.

The current threat from terrorism and extremist groups in the United Kingdom may include the exploitation of vulnerable people. Groups may seek to influence vulnerable children and involve them in terrorism or in activity in support of terrorism. The normalisation of extreme views may also make children and young people vulnerable to future manipulation and exploitation.

Banks Lane Junior School is clear that where there is concern in respect of exploitation of this kind it will be treated as safeguarding concern.

Prevention work and reductions of risks will include the SMSC, PSHE curriculum, SEND policy, assembly policy, integration of pupils by gender and SEN, the application of the anti-bullying policy and a commitment to building and maintaining an inclusive and fair school environment and community. Whilst the education of children is the prime purpose of our school it is recognised that the school operates in the wider community. Its facilities are therefore only available to local groups when this does not conflict with either the interests of its pupils or the wellbeing and workload of its staff.

OTHER SPECIFIC SAFEGUARDING ISSUES

Domestic abuse/violence: In our school we believe that all our pupils have the right to be safe at school and also in their own homes. We are aware that some children may be living in situations where they are directly or indirectly affected by incidents of domestic abuse or violence. Where we are concerned that domestic abuse or violence is present in the home we will follow our safeguarding and domestic abuse processes. Domestic abuse/violence is observed, reported and recorded following the school's safeguarding flowchart. MASH team may be contacted, safeguarding referral made or EHA carried out. Learning Mentor at school works closely with parents, children and other professional bodies to support families through the process.

Honour Based Violence (HBV) including Forced Marriage (FM): Our staff have been trained to understand honour based violence and forced marriage; they are alert to possible indicators. They are aware that forced marriage is an entirely separate issue from arranged marriage; that it is a human rights abuse and falls within the Crown Prosecution Service definition of domestic violence and that HBV and FM can affect both young men and women.

As a school we would never attempt to intervene directly; where this is suspected, nor would we speak to parents before sharing our concerns with appropriate agencies.

Female Genital Mutilation (FGM): All members of our school community are alert to the possibility of a girl being at risk of FGM, or already having suffered FGM. They have been made aware of potential indicators that a child or young person may be at risk of FGM and will act accordingly on any concerns or disclosures. We will also follow national guidance on mandatory reporting requirements.

Breast Ironing: Staff have been made aware of an act of abuse performed on young girls (from around the age of 9 years old) in which their breasts are ironed, massaged and/or pounded, burned with heated objects or covered with an elastic belt to prevent or delay the development of their breasts. Where such abuse is suspected or disclosed staff will follow safeguarding and child protection systems.

The criminal exploitation of children: The criminal exploitation of children is a geographically widespread form of harm that is a typical feature of county lines criminal activity: drug networks or gangs groom and exploit children and young people to carry drugs and money from urban areas to suburban and rural areas, market and seaside towns. Key to identifying potential involvement in county lines are missing episodes, when the victim may have been trafficked for the purpose of transporting drugs.

Human trafficking is defined by the United Nations, in respect of children, as "the recruitment, transport, transfer, harbouring or receipt of a person by such means as threat or use of force or other forms of coercion, of abduction, of fraud or deception for the purpose of exploitation." **Any** child transported for exploitative reasons is considered to be a trafficking victim.

As a school we are alert to the possible indicators both for our children and their families. Any concerns will be reported using our safeguarding and child protection processes. In addition to Greater Manchester guidance we also refer to [Criminal exploitation of children and vulnerable adults: County Lines](#).

SAFER RECRUITMENT AND SAFER WORKING PRACTICE

The school pays full regard to DfE guidance 'Keeping Children Safe in Education' 2018 and with reference to the 'Position of Trust' offence (Sexual Offences Act 2003). We ensure that all appropriate measures are applied in relation to everyone who works in the school who is likely to be perceived by the children as a safe and trustworthy adult.

We do this by:

Operating safer recruitment practices including appropriate Disclosure and Barring Service (DBS) and reference checks, verifying identity, academic and vocational qualifications, obtaining professional references, checking previous employment history and ensuring the person has the right to work in the UK. Our practices also includes undertaking interviews and checking if individuals are barred or prohibited from working with children in accordance with DBS and Department for Education (DfE) guidance. In line with statutory guidance we maintain a single central record to evidence checks completed for staff and volunteers working in the school community. This document is reviewed termly by a member of the SLT and is periodically checked by the Safeguarding Governor.

Every volunteer and member of staff (including supply staff and those contracted to deliver sports or other activities such as counselling) has a 'safeguarding induction' and we ensure that staff and volunteers adhere to a published code of conduct and other relevant professional standards at all times. This extends to before and after school activities. Staff and visitors are aware of the requirements in respect of phone usage, camera enabled devices, social media and on-line conduct. Other professionals and visitors to our school are made aware of the requirement and expectations we have in respect of safeguarding our children including the use of mobile and camera enabled devices.

We ensure that:

- Any disciplinary proceedings against staff related to Child Protection matters are concluded in full in accordance with Government guidance "Keeping Children Safe in Education 2018" and SSCB, LADO and HR Policy, procedures and guidance.
- All staff and other adults on site are aware of the need for maintaining appropriate and professional boundaries in their relationship with pupils and parents, following the Code of Conduct.
- Adequate risk assessments are in place including for extended school/ wrap around provision, volunteers, work placements and holiday activities (directly related to school).

- Staff are clear how to raise a concern, where to find 'whistleblowing policies' and are confident to report concerns of misconduct.
- All staff are required to disclose any convictions, cautions, court orders, reprimands and warnings that may affect their suitability to work with children (whether received before or during their employment at the setting).

GOVERNING BOARD DUTIES & RESPONSIBILITIES

The Governing Board fully recognises its responsibilities with regard to safeguarding and promoting the welfare of children in accordance with Government guidance and pays particular regard to Keeping Children Safe in Education (2018).

The Governing Board have agreed processes which allow them to monitor and ensure that the school:

- Have robust safeguarding procedures in place;
- Operates safer recruitment procedures and appropriate checks are carried out on newly appointed staff and other adults working on the school site;
- Have procedures for dealing with allegations of abuse against any member of staff or adult on site;
- Has appointed a member of the Leadership Team who is designated to take lead responsibility for dealing with safeguarding and Child Protection issues;
- Will take steps to remedy any deficiencies or weaknesses with regard to safeguarding arrangements;
- Is supported by the Governing Board nominating a member responsible for liaising with the LA and/or partner agencies in the event of allegations of abuse against the Headteacher; this is the Chair.
- Carries out an annual review of the safeguarding policy and procedures;
- Carries out an annual safeguarding Audit in consultation with the Governing Board, sharing this with the Stockport safeguarding Children Board on request.

OTHER RELATED POLICIES

The school takes safeguarding seriously and understands this policy is over- arching. The school also maintains other linked policies in line with the legislative requirements; together these make up the suite of policies to safeguard and promote the welfare of children in this school.

- Attendance Policy
- Data Protection Policy
- Staff Code of Conduct / Staff Behaviour Policy
- Acceptable Use Policy
- Anti-bullying Policy

APPENDICES

SAFEGUARDING FLOWCHART

When a disclosure or observation has been made to an adult

- Immediately record information accurately (including a skin map, if appropriate and safe to do so)
- Passed to AB or EM in his absence) **within 30 mins** of disclosure or observation
- If neither AB or EM available, information to be given to GC
- Most MLT and Learning Mentor have also had the DSL training - CR, JH, NW, JG.

↓

- Safeguarding Team to decide appropriate course of action (R, A, G) within 30 minutes of receiving NOC.
- All actions will be recorded by DSL and shared via email with members of SLT.
- Parents/Carers contacted and informed (if appropriate to do so).

↙ ↘

URGENT ACTION REQUIRED

- Make a referral to Social Care as an emergency referral.
- Use all documents forwarded to support discussion with Social Care team, using Stockport Child Protection paperwork where possible.

This will then be dealt with by the social care team.

QUERY - AMBER ACTION

- Contact MASSH Team for support & advice

MONITOR CHILD

- Advise staff to continue to monitor the situation, keeping all NOC in a file which will be kept in the locked

↓

- Consider, with support from MASSH, whether a TAC or referral are appropriate.

↙ ↘

- If a number of NOC are received within a short period of time or there are recurring issues contact MASSH

↓

Complete an EHA form with the parent/Carer and consider beginning the TAC process with support from the MASSH Team.

All actions must be made and reported to the Safeguarding Team within an hour of receiving the NOC. If you are not happy with the actions taken, please talk to the headteacher to share your concerns. ALL NOC received are discussed weekly by the Safeguarding Team.

REMEMBER: it is NOT the role of education to investigate a child protection concern. ALL information should be reported to Social Care and/or the Police by the DSO.

The staff and volunteers in our school are committed to safeguarding all our children

We work to:

- provide a safe environment for our children;
- support children and families using early intervention strategies;
- notice and take appropriate action to help any of our children who are either at risk of, or are suffering from, significant harm.

Our Designated Safeguarding Lead is:



If you have any concerns about the welfare of any of our children you can report them to the above named persons. If they are not available, please speak to the Headteacher, Mr Ed Milner. Staff and volunteers must record their concerns on a note of concern form and include a physical injury/Board map where appropriate

These should be passed in a sealed envelope to the Designated Safeguarding Lead immediately

Further Advice and guidance can also be sought from

The Safeguarding Unit 0161 474 5657

USEFUL LINKS, FURTHER ADVICE AND GUIDANCE

Local Guidance

[Greater Manchester Safeguarding Procedures](#)

[Young People and Self-harm- Stockport Schools' Version](#)

[Stockport Female Genital Mutilation Pathway](#)

[Stockport procedures for responding to child sexual exploitation](#)

[Stockport Suicide Prevention](#)

[Greater Manchester Project Phoenix \(action against child sexual exploitation\)](#)

[Stockport Early Help Assessment](#)

[Private Fostering in Stockport](#)

[Information Sharing and Team Around the School](#)

[Information Governance](#)

[Levels of Need](#)

[Stockport Safeguarding Children Board](#)

National Guidance & Resource

[Keeping Children Safe in Education 2018](#)

[Early-years-foundation-stage-framework](#)

[Working Together to Safeguard Children-2018](#)

[What-to-do-if-you're-worried-a-child-is-being-abused](#)

[Brook sexual-behaviours-traffic-light-tool](#)

[Sexual violence and sexual harassment between children in schools and colleges.pdf](#)

[Teachers-standards](#)

[Responding to sexting incidents](#)

[Sexting_In_Schools_Jan17.pdf](#)

[Prevent-duty-guidance](#)

[Educate Against Hate](#)

[Safeguarding-children-who-may-have-been-trafficked-practice-guidance](#)

[Multi-agency statutory guidance on FGM](#)

INFORMATION YOU MAY BE ASKED TO PROVIDE

When you make a referral to Social Care (Children's Services) or to the police, you should provide as much of the following information as possible:

- **Child's name, date of birth, address, telephone number and ethnic origin;**
- **Family details** - who lives in the home - and any other significant adults;
- What is causing concern and the **evidence** that you have gathered to support your concerns;
- Any **additional needs** the child and/or family may have including language, disability and communication;
- Clarification of discussion with any family members if a discussion has been appropriate;
- Clarification of any ongoing assistance that you are giving to the family;
- Your name, workplace and contact telephone number.

All Child Protection referral phone calls made to the Multi-Agency Safeguarding & Support Hub (MASSH) to secure a response from Social Care must be supported with written documentation. In Stockport this is through the online Child Protection Referral form.

Remember- Anyone in school can make a child protection referral

INFORMATION & TELEPHONE NUMBERS FOR CONSULTATION AND REFERRAL

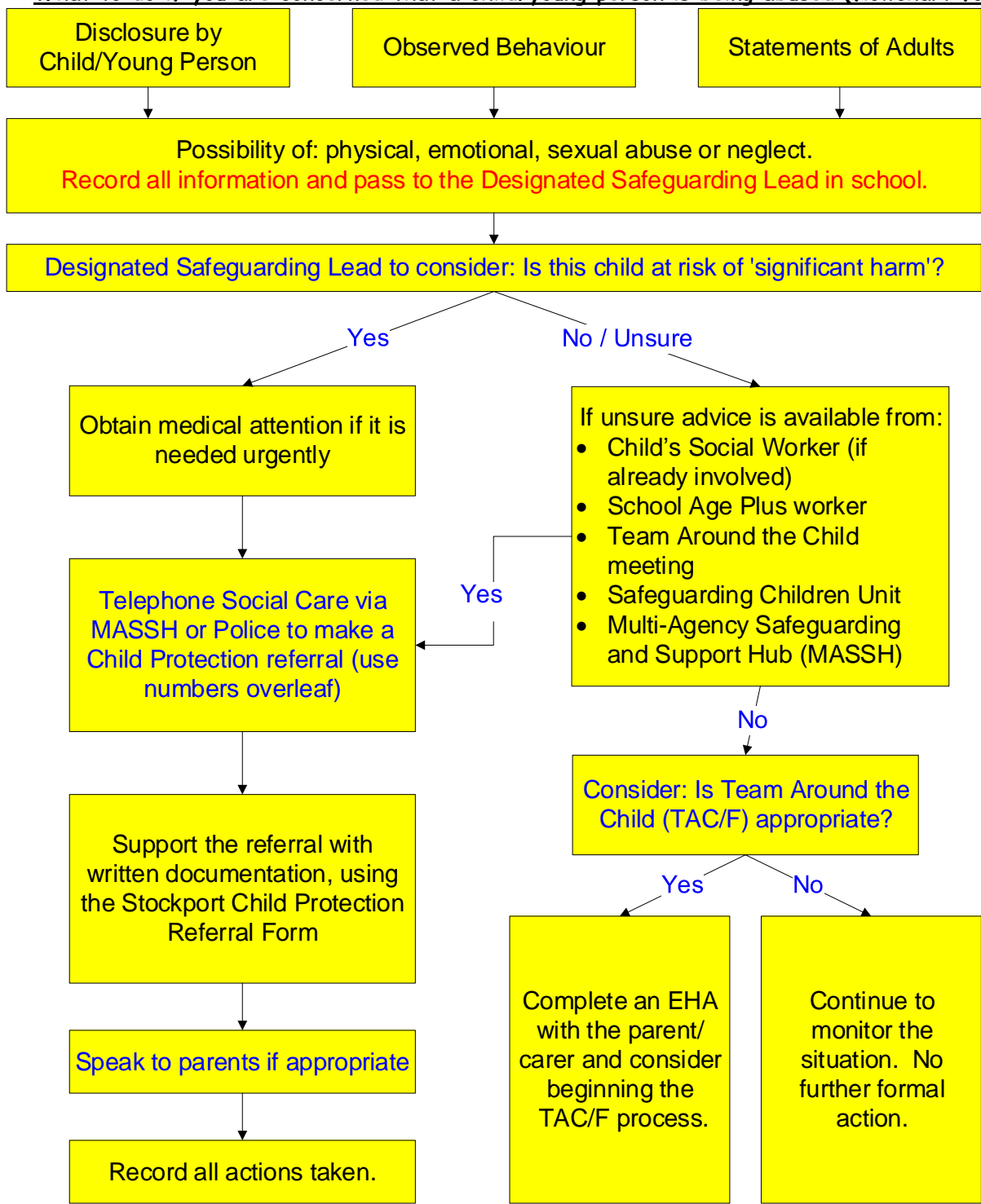
Children's Services- child protection referral

- Online (to the MASSH)- <https://www.stockport.gov.uk/contacting-the-massh>
- The Multi -agency Safeguarding and Support Hub (MASSH)
Monday to Thursday 8.30am to 5.00pm,
Friday 8.30am to 4.30pm.
tel. (0161) 217-6028 or 6024.
- Out of hours referrals and advice tel: (0161) 718-2118
- Greater Manchester Police tel:101 (non- emergency) 999 emergency

Advice is available from:

- Child's Social Worker (if already involved)
- School Age Plus worker
- Team Around the School meeting
- Safeguarding Children Unit tel. (0161) 474-5657
- The Multi -agency Safeguarding and Support Hub (MASSH)
tel. (0161) 217-6028 or 6024
- Senior Adviser for Safeguarding in Education tel. (0161) 474-5657

What to do if you are concerned that a child/young person is being abused (flowchart for Education)



REMEMBER: It is not the role of Education to investigate a Child Protection concern. Report the information you have and Social Care and/or the Police will investigate.

Contextual Safeguarding

Possible indicators of abuse

Indicators are provided as a guide, concerns and context should be discussed with the DSL

Sexual

- Genital discomfort, pain, itching, bruising, injuries
- Public /compulsive masturbation
- Eating disorders
- Sexually explicit behaviour or language not age
- Sexually Transmitted Infection
- Sexually explicit drawings
- Pregnancy

Physical

- Bruises, black eyes and broken bones
- Unexplained or untreated injuries
- Injuries to unusual Board parts e.g. thighs, back, abdomen
- Bruising that resembles hand/finger marks
- Burns/scalds
- Human bites/cigarette burns
- Injuries that the child cannot explain or explains unconvincingly
- Injuries in babies and non mobile children

Behaviour

- Change in general behaviour
 - Low self-esteem
- Extremely passive/aggressive
 - Sleeping difficulties
 - Eating disorder
 - Lethargy/tiredness
 - Fear of certain adults
- Poor social relationships
- Bullying/anti-social behaviours
- School attendance difficulties
 - Disclosure
 - Self-harm

Neglect

- Inappropriately dressed
- Undernourished/always hungry
- Untreated medical problems e.g. dental decay, head lice etc.
- Lethargy, tiredness or aggressive tendencies
- Lack of basic needs being met- food, shelter warmth etc.

Emotional

- Physical, mental & emotional development lags
- Talks of excessive punishment
- Fear of parents being contacted
- Sudden speech disorders
- Running away
- Self-deprecation, low self esteem

Online Abuse

The LADO

[Greater Manchester procedures online- Allegation management](#)

The process of managing allegations starts where information comes to the attention of a manager which suggests that an adult working with children may have:

- Behaved in a way that has harmed a child, or may have harmed a child;
- Possibly committed a criminal offence against or related to a child; or
- Behaved towards a child or children in a way that indicates he/she may pose a risk of harm to children.

Concerns or allegations about the behaviour of an adult may be brought to the attention of a manager in a variety of ways. For example:

- An allegation made directly by a child or parent;
- An allegation made by a colleague or member of staff;
- Information from police or local authority social care team;
- Information from a third party or the general public;
- Information disclosed anonymously or online; or
- Concerns generated through an employment relationship.

The procedures allow for consideration of the adult's behaviour at the earliest opportunity when a concern or allegation arises and is brought to the manager/employer's attention.

When to contact the Local Authority Designated Officer (LADO)

It is important to ensure that even apparently less serious allegations are seen to be followed up, and that they are examined objectively by someone independent of the organisation concerned.

Discussion should always take place between the employer and the LADO when the concern or allegation meets the criteria.

Some examples of this may be where an individual has:

- Contravened or has continued to contravene any safe practice guidance given by his/her organisation or regulatory Board;

- Exploited or abused a position of power;
- Acted in an irresponsible manner which any reasonable person would find alarming or questionable given the nature of work undertaken;
- Demonstrated a failure to understand or appreciate how his or her own actions or those of others could adversely impact upon the safety and well-being of a child;
- Demonstrated an inability to make sound professional judgements which safeguard the welfare of children;
- Failed to follow adequately policy or procedures relating to safeguarding and promoting the welfare of children;
- Failed to understand or recognise the need for clear personal and professional boundaries in his or her work;
- Behaved in a way in her or her personal life which could put children at risk of harm;
- Become the subject of criminal proceedings not relating to a child;
- Become subject to enquiries under local child protection procedures and/or child subject to [Child Protection Plan](#);
- Behaved in a way which seriously undermines the trust and confidence placed in him or her by the employer.

Colleagues with concerns can contact the LADO on 0161 474 5657.